

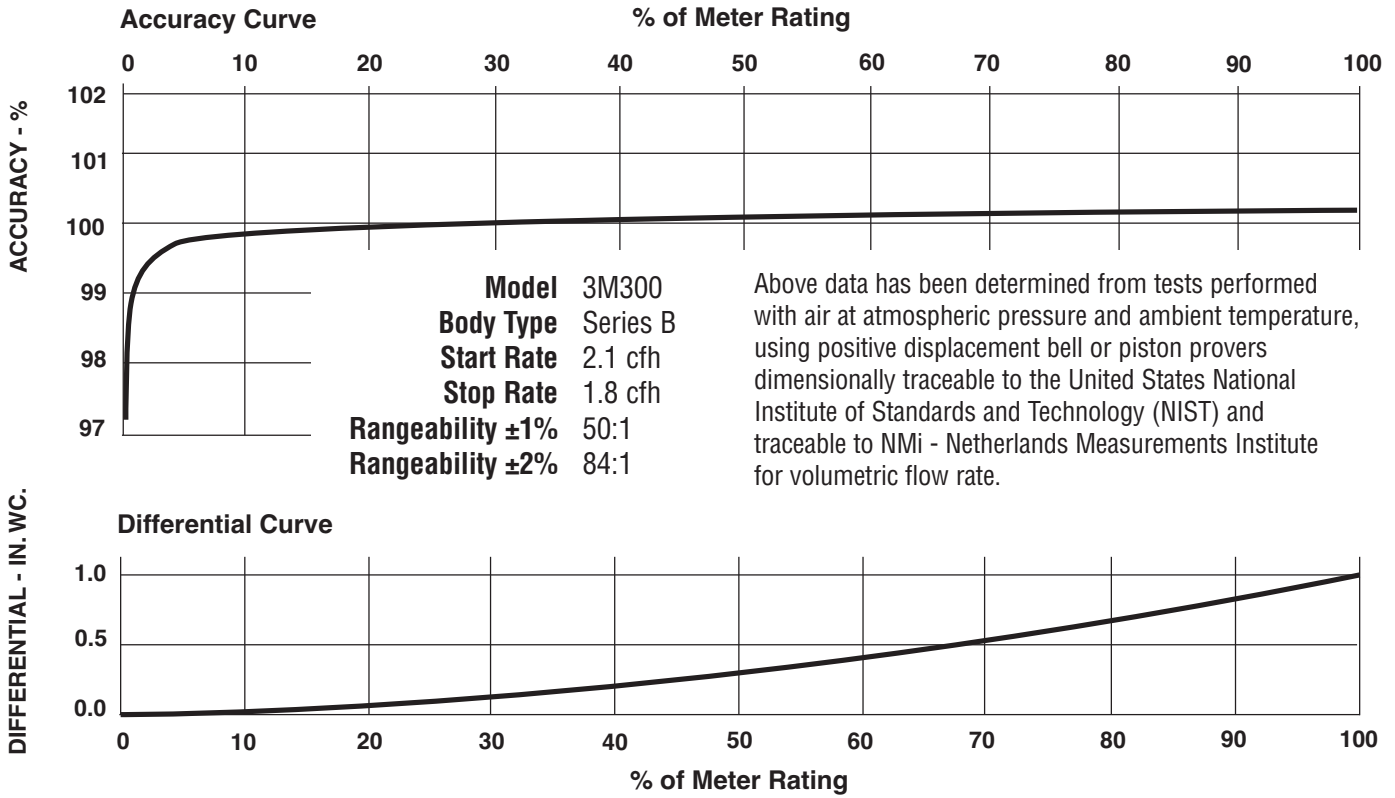
## Series B3 ROOTS® Meter 3M300 High Pressure Rotary Meter

|   | <b>UNITS</b> | <b>Imperial</b>      | <b>UNITS</b> | <b>Metric</b> |
|---|--------------|----------------------|--------------|---------------|
| Temperature Range                               | deg. F       | -40 to +140          | deg. C       | -40 to +60    |
| Base Rating (Q Max.)                            | acfh         | 3000                 | m3/h         | 85,0          |
| Max. Operating Pressure (MAOP)                  | psig         | 300                  | kPa          | 2065          |
| Leak Test (125% MAOP)                           | psig         | 375                  | kPa          | 2575          |
| Static Test (2 x MAOP)                          | psig         | 600                  | kPa          | 4130          |
| Rangeability +/- 1%                             | ratio        | 50:1                 | ratio        | 50:1          |
| Rangeability +/- 2%                             | ratio        | 84:1                 | ratio        | 84:1          |
| Start Rate                                      | cfh          | 2.1                  | m3/h         | 0,0595        |
| Stop Rate                                       | cfh          | 1.8                  | m3/h         | 0,0510        |
| Flow Rate @ 0.5" w.c., Gas                      | cfh          | 2580                 | m3/h         | 73,1          |
| Avg. Differential, 100% Flow                    | in. w.c.     | 1                    | mbar         | 2,5           |
| Max. Pressurization Rate                        | psig/sec     | 5                    | kPa/sec      | 35            |
| Max. Operating Speed                            | rpm          | 2000                 | rpm          | 2000          |
| Gear Ratio                                      | ratio        | 400:1                | ratio        | 141,1764:1    |
| Displaced Volume/Revolution                     | cf           | 0.025                | m3           | 0,000708      |
| Drive Rate, CD                                  | cf/rev       | 10                   | m3/rev       | 0,1           |
| Min. Odometer Reading                           | cf           | 0.2                  | m3           | 0,002         |
| Odometer Turnover                               | yrs.         | 3.81                 | yrs.         | 1,34          |
| Nominal Pipe Size                               | in.          | 2                    | mm           | 50,8          |
| Flange-to-Flange                                | in.          | 6-3/4                | mm           | 171           |
| Flange Connection                               | ANSI         | 300#FF               | ANSI         | 300#FF        |
| Bolts per Flange                                | qty.         | 8                    | qty.         | 8             |
| Bolt Size <sup>1</sup>                          | in.          | 5/8 - 11             | in.          | 5/8 - 11      |
| Flange Bolt Hole Depth                          | in.          | 15/16                | mm           | 23,8          |
| Bolt Torque: Lubricated/Non-Lub.                | ft.-lb.      | 80                   | N-m          | 108           |
| Restricting Orifice (100%)                      | in.          | 31/64                | mm           | 12,303        |
| Oil Capacity – Side Inlet                       | oz.          | 1.25                 | ml           | 37            |
| Oil Capacity – Top Inlet                        | oz.          | 7.6                  | ml           | 225           |
| Counter Version (CTR) <sup>2</sup>              |              |                      |              |               |
| Net Weight                                      | lbs.         | 29                   | kg           | 13,2          |
| Shipping Weight                                 | lbs.         | 31                   | kg           | 14,1          |
| Carton Size                                     | in.          | 26 x 10-5/16 x 7-3/4 | cm           | 66 x 38 x 40  |
| Counter with Instrument Drive (CD) <sup>2</sup> |              |                      |              |               |
| Net Weight                                      | lbs.         | 31                   | kg           | 14,1          |
| Shipping Weight                                 | lbs.         | 34                   | kg           | 15,4          |
| Carton Size                                     | in.          | 14 x 29-3/4 x 11-1/2 | cm           | 36 x 76 x 29  |

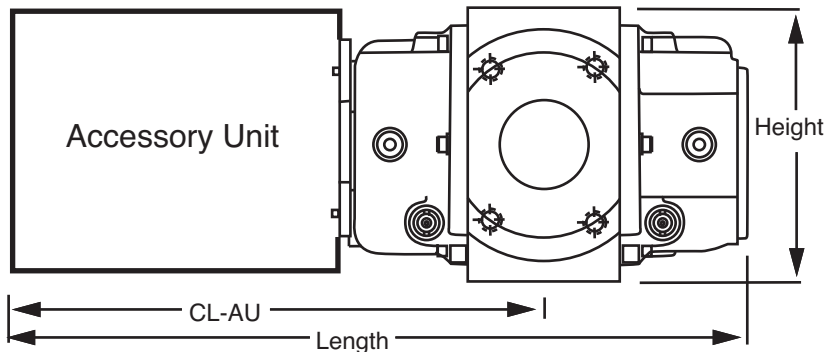
**NOTES:**

<sup>1</sup> Bolt Length varies by application.

<sup>2</sup> Weights and dimensions available for CPS upon request.



| 3M300<br>Series B3 | Overall Length |     | Overall Height |     | Width (Flange/Flange) |     | Centerline to<br>Accessory End (CL-AU) |     | Request Detailed<br>Drawing Number |
|--------------------|----------------|-----|----------------|-----|-----------------------|-----|--|-----|------------------------------------|
|                    | inches         | mm  | inches         | mm  | inches                | mm  | inches                                 | mm  |                                    |
| CTR                | 17-5/32        | 436 | 6-31/32        | 177 | 6-3/4                 | 171 | 10-29/32                               | 277 | D054722-000                        |
| CD                 | 20-31/32       | 533 | 6-31/32        | 177 | 6-3/4                 | 171 | 14-23/32                               | 374 | D054439-000                        |
| CPW/CEX            | 19-1/4         | 489 | 6-31/32        | 177 | 6-3/4                 | 171 | 13                                     | 331 | D056121-000                        |



**To order**

Specify: Meter Series, Size and Type (i.e. ROOTS® Meter Series B3 3M300 CD).  
 For CD, specify Inlet (Top or Side) and ID Rotation (CW-B or CCW-A).  
 For Pulsar, specify Single or Dual Connectors and Connector Type (MS Circular, Conduit or Cable Gland).  
 For more specific ordering information on the electronic products, request: TS:SSP or TS:MC.  
 Contact the factory for other available information, options, or special requests.

**POWER EQUIPMENT COMPANY**  
 2011 WILLIAMSBURG ROAD  
 RICHMOND, VIRGINIA 23231  
 (804) 236-3800 (FAX) (804) 236-3882  
 www.peconet.com

