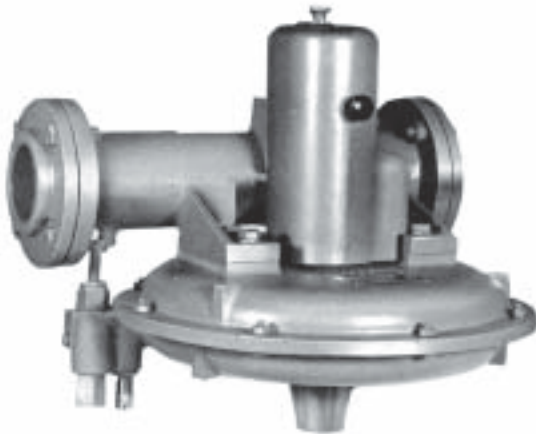




Automatic Temperature Control Valves

Series "CR"



Eclipse Series "CR" Valves are simple, but reliable, air operated valves used for high-low control of air to combustion systems. Air flow through the valve is controlled by an inexpensive solenoid valve requiring only a small amount of electrical power.

Eclipse "CR" Valves are available in 9 sizes from 1-1/4" through 6". Capacities range from 2,000 to 125,000 cubic feet of air per hour depending on size of valve and pressure drop taken. Operating pressure range is 2 oz. to 4 psig.

OPERATION

Motive power for the "CR" valve is supplied by the same air that is being controlled. A small quantity of the main air supply is bled off and controlled by a full port 3/8" solenoid valve connected to an electrical temperature control or a thermostat depending on the type of operation. The movement of this air changes the internal pressure in the lower valve chamber causing

a diaphragm to rise or fall thus opening or closing an inter-connected butterfly located inside the "CR" valve. Whenever the temperature in the medium or chamber to be heated falls below the desired level, the butterfly in the "CR" valve will open allowing more air to pass through it. Once the desired temperature has been attained, the butterfly will close. The extent to which the valve will open and close can be easily regulated by means of high and low control thumb nuts. The speed of the valve action may also be varied to suit the desired speed of valve control. In this way, the temperature is held practically constant. The variation will depend to a great extent on the action of the thermostat or control equipment.

ADVANTAGES

- • • Flexible operation
- • • Simple adjusting regulation
- • • Rugged lightweight construction
- • • Easy installation
- • • Not position-conscious

DESIGN FEATURES

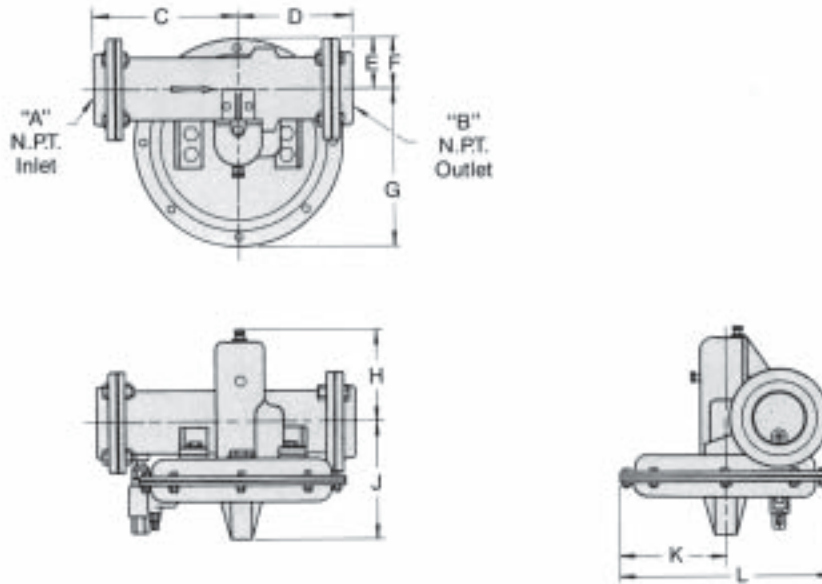
Because the Eclipse Series "CR" Temperature Control Valve operates by air pressure alone, there are no small gears, springs, or fuses to wear or get out of order. Oiling problems are eliminated. All main castings are of aluminum alloy which makes for ease of handling and low shipping costs. All Series "CR" valves are rugged in construction and virtually free from wear. Oilless materials are used on all moving parts to keep wear to a minimum. Heavy grade du Pont Fairprene is used for the operating diaphragm which will provide years of service without replacement.

All sizes are flanged for easy installation. Companion flanges are provided as standard equipment on all sizes.

CAPACITIES

Catalog Number	Valve Size	Capacity CFH—Air/Inches W.C. Drop			
		0.5"	1.0"	2.0"	3.0"
250 CR	1-1/4"	2,000	2,440	3,000	3,600
260 CR	1-1/2"	2,400	3,000	3,600	4,800
280 CR	2"	4,800	6,000	8,000	10,000
2100 CR	2-1/2"	6,400	8,000	11,500	15,000
2120 CR	3"	8,000	10,000	15,000	20,000
2160 CR	4"	18,000	24,000	32,500	40,000
2200 CR	5"	37,000	51,500	74,000	90,500
2240 CR	6"	48,000	75,000	100,000	125,000

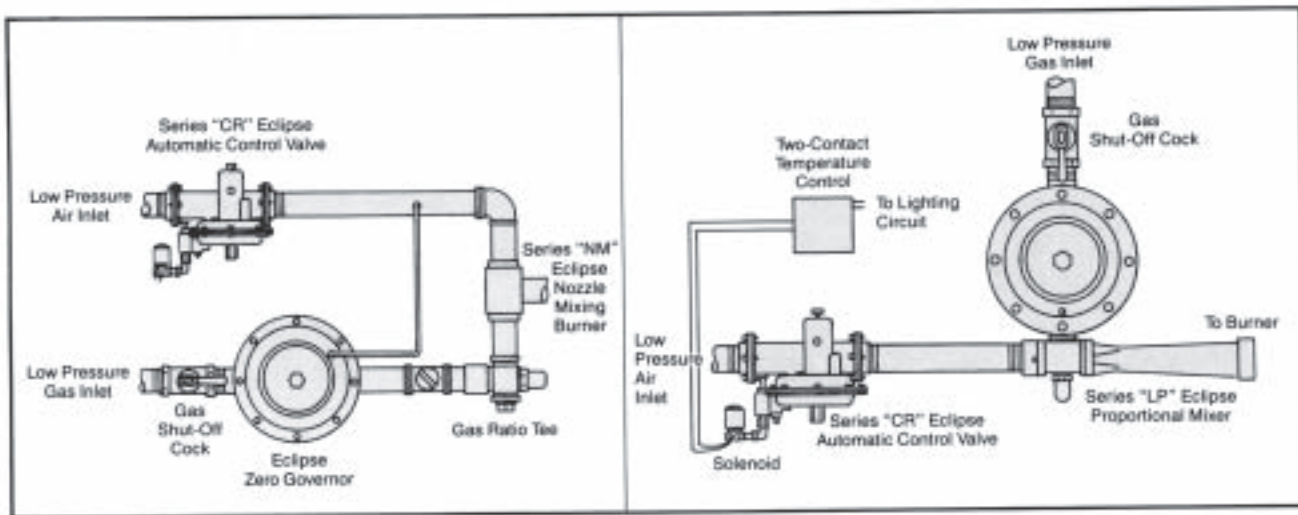
DIMENSIONS & SPECIFICATIONS



Catalog Number	Assembly Number	Dimensions											Approx. Wt. Lbs.
		A	B	C	D	E	F	G	H	J	K	L	
250 CR	500201	1-1/4	1-1/4	6-1/2	4-1/4	2-1/8	2-3/8	6-1/8	4-3/8	5-3/4	4-1/4	8-1/2	15
260 CR	500202	1-1/2	1-1/2	6-1/2	4-1/4	2-1/8	2-3/8	6-1/8	4-3/8	5-3/4	4-1/4	8-1/2	15
280 CR	500203	2	2	8-1/4	5-5/8	2-1/2	3-1/8	9-1/8	5-1/2	7-1/4	6-1/8	12-1/4	27
2100 CR	500230	2-1/2	2-1/2	8-3/4	7-1/16	3-1/16	3-1/8	9-1/8	5-1/2	7-1/4	6-1/8	12-1/4	30
2120 CR	500204	3	3	8-3/4	7-1/16	3-1/16	3-1/8	9-1/8	5-1/2	7-1/4	6-1/8	12-1/4	30
2160 CR	500205	4	4	8-1/2	7-1/8	4	2-1/2	9-3/4	5-3/4	8-1/8	6-1/8	12-1/4	45
2200 CR	500206	5	5	9-1/2	8-1/8	5	1-1/2	10-3/4	6-3/4	9	6-1/8	12-1/4	60
2240 CR	500207	6	6	9-1/2	8-1/8	5	1-1/2	10-3/4	6-3/4	9	6-1/8	12-1/4	60

NOTE: All dimensions are in inches.

TYPICAL APPLICATIONS



ECLIPSE™
Innovative Thermal Solutions

Eclipse Combustion

ISO 9001 Registered



Eclipse Combustion

Offered By:

Power Equipment Company
2011 Williamsburg Road
Richmond, VA 23231
Phone: 804-236-3800 Fax: 804-236-3882

www.peconet.com