



ZIMMER[™]
the power of innovation

ZIMMER

the power of innovation



More energy. Fewer problems.

Seventy years after Algas-SDI™ developed its first vaporizer, it has unveiled the latest. The expertise of an industry-leading company, coupled with advanced technology, has led to the invention of the ZIMMER, a simple, reliable, affordable LPG vaporizer.

Simple

You don't have to be a genius to install or operate the world's most advanced vaporizer. The self-regulating heaters take care of themselves. There's no switches, thermostats, floats, relays, or other electrical controls, and it operates on any voltage.* It's small, light-weight, and wall-mountable, which means you can easily install it without using valuable floor space. It's that easy.

- **No switches, thermostats, floats, relays, or other electrical controls**
- **Operates on any voltage**
- **Small, light-weight, and wall-mountable**
- **Explosion-proof**

Reliable

The ZIMMER was designed so that you can quickly install it and let it run without worries. Based on rigorous research and development, the ZIMMER has very few parts and sets the standard for low-maintenance. There's no water to lead to corrosion. Plus, no remote boxes or monitoring systems are required. That's quality.

- **Very few parts, low-maintenance**
- **No corrosion, no water to monitor**
- **Based on rigorous research and development**

Affordable

You no longer have to make a choice between high quality and a low price. With the ZIMMER, you can have both. What's more, using a vaporizer allows you to get more energy out of your tanks or cylinders. When you're using their full capacity, you're providing true value.

- **High quality and a low price**
- **Get full capacity out of tanks and cylinders and improve service to your customers**
- **Provide a sensible solution for the success of your customers' businesses**

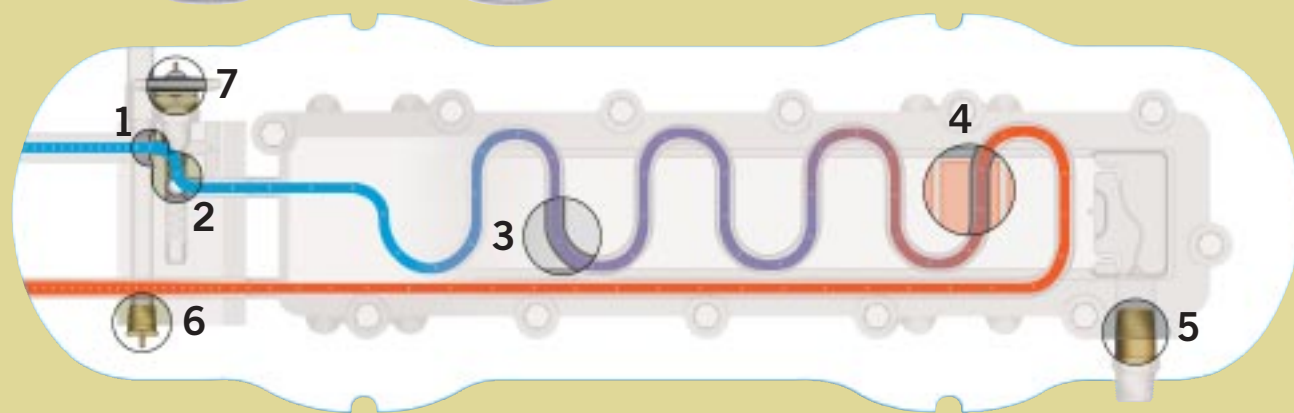
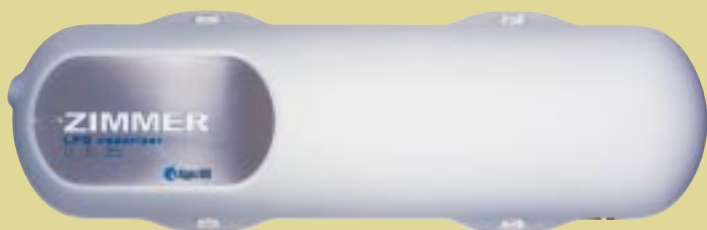
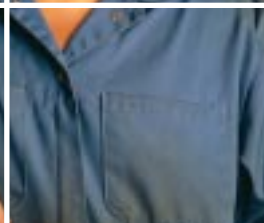
Now Available

The ZIMMER gives you more of what you need – simplicity, reliability, and affordability – and less of what you don't want – corrosion and break downs.

*100-240 volts AC or DC



The ZIMMER is suitable for an endless array of applications, including light industrial, commercial, transportation, and portable. Many LPG users, from restaurants to construction sites, can now enjoy the benefits of this revolutionary vaporizer.



Step 1.
Liquid LPG enters the inlet valve manifold where the inlet valve screen prevents debris from entering.

Step 2.
Liquid flows through the inlet valve where it is controlled by a metal-to-metal seat and ball. The infinite seating positions of the ball provide long life, while the inverted seat prevents foreign material from collecting on the valve seat.

Step 3.
As liquid passes through the tubes, energy is transferred, causing the liquid to boil. Steel tubes cast into the aluminum heat sink provide a secure pressure boundary and exceptional heat transfer.

Step 4.
Energy drawn from the heat sink is replenished by replaceable self-regulating heaters, without the need for switches, temperature sensors, relays, or other controls. The heaters cannot overheat by nature of their design.

Step 5.
Power is supplied to the heaters by a wide range of voltages, including AC or DC, through a factory-mounted explosion-proof seal.

Step 6.
As vapor exits the unit, it heats or cools the temperature-sensitive bulb, providing feedback to the inlet valve.

Step 7.
The control valve receives feedback from the temperature-sensing bulb and combines it with pressure feedback to ensure only superheated vapor leaves the vaporizer. The valve modulates the inlet flow to control the process.


The ZIMMER's advanced design incorporates technology never seen before in the vaporizer industry. By departing from the status quo, the engineers behind the ZIMMER created a product that allows an improved method of extracting energy from tanks and cylinders. Take a look at the ZIMMER and you'll see something radically different.

Options / Accessories

- Wall mount kit
- Regulator kit
- Valve and strainer kit



ZIMMER SPECIFICATIONS

Vaporizer Type	Dry Electric; Feed Through				
Vaporization Capacity	kg/hr	40			
	lbs/hr	88			
	Million kcal/hr	0,448			
	Million BTU/hr	1.82			
	US Gallons/hr (nominal)	20			
Hazardous Area Classifications	EEx d IIA T3,  II 1 G Class I Division 1 Group D T3C				
Electrical Info	Voltage	Phase	Watts* (Max)	Amps*	
	100 - 240 Volts	120	1	3270	27,3
	Freq: 50 - 60 HZ	208	1	4510	21,7
		220	1	4680	21,3
		240	1	4680	19,5
Heat Exchanger	Surface Area	cm ²	1,200		
		in ²	186		
	Design Pressure	Bar	17,24		
		psig	250		
	Proof Pressure	Bar	86,2		
		psig	1250		
Relief Valve Set Point	Bar	17,24			
	psig	250			
Overall Dimensions	Length 31.14 ^{IN} (791 ^{MM})	Height 10.24 ^{IN} (260.1 ^{MM})	Width 6.40 ^{IN} (162.7 ^{MM})		
Shipping Weight	lbs	66			
	kg	30			
Shipping Dimensions	in	35L x 15W x 12H			
	cm	88.9L x 38.1 x 30.48H			
Design Standards	NFPA 58	EN 50014			
	NFPA 70	EN 50018			
	UL 823	IEC 60079-0			
	UL 50	IEC 60079-1			
	UL 1203	94/9/EC ATEX Directive			
	NEMA 250	73/23/EEC Low Voltage Directive			
	CSA 22.2 No. 30-M1989	89/336/EEC EMC Directive			
	ASME Sec. VIII Div. 1	97/23/EC Pressure Equipment Directive			
Optional Accessories	Mounting kit P/N 80885				
	Valve and Strainer Kit P/N 80892				
	Outlet Regulator P/N 80890				
Approvals	CE, UL, CUL, DEMKO, PED(DNV)				

*Peak power, vaporizer will adjust to match LPG load. Electrical Consumption: 0,1 kw hrs/kg vaporized

**CONTACT YOUR DISTRIBUTOR TO LEARN
MORE ABOUT THE ZIMMER TODAY.**



Power Equipment Company
2011 Williamsburg Road, Richmond, VA 23231 USA
Phone: 804-236-3800 FAX: 804-236-3882

www.peconet.com